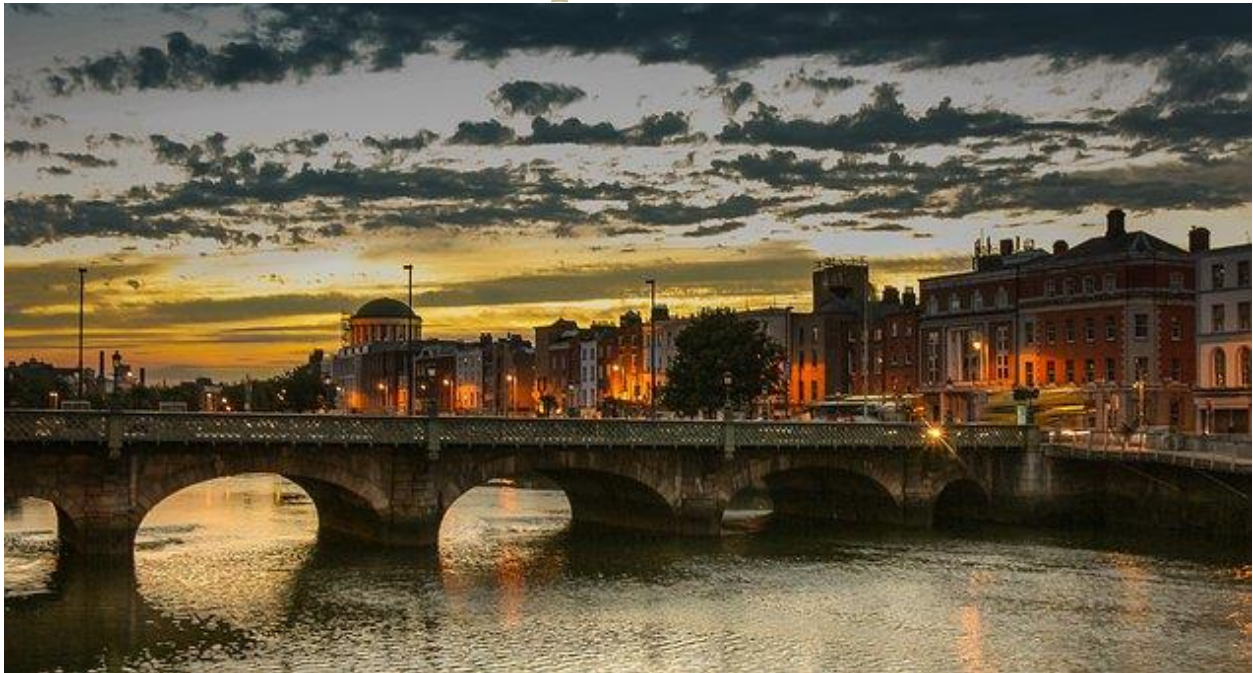


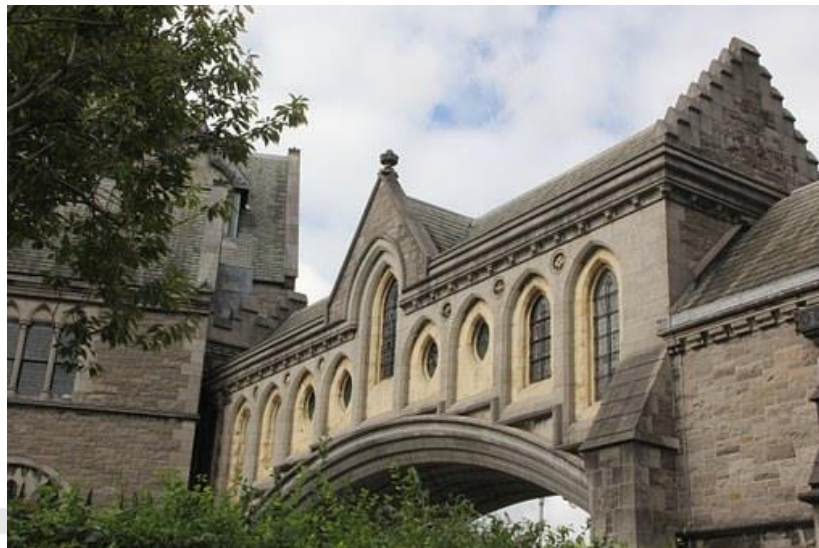
Celebration · ESCAPES ·

— TRANSFORMING DREAMS INTO MEMORIES —

7 -10 Day Exceptional Ireland Christmas Experience



**CUSTOM ITINERARY – YOUR FLEXIBLE INCLUSIONS DATES –
7-10 DAY ITINERARY**



www.celebraionescapes.com

678-500-9548

Celebration · ESCAPES ·

— TRANSFORMING DREAMS INTO MEMORIES —

7-10 Day Ireland Christmas Itinerary: **Dublin**



Day 1 Arrival in Ireland: **US – Dublin Arrival December 18th** .

Upon arrival in Dublin, enjoy a comfortable and efficient luxury VIP meet and greet service. Beginning from the aircraft, escorting you right to your waiting driver for a transfer to your hotel.

- You will be met at the aircraft with a name sign, at this point you will be escorted through immigration.
- Your assistant will be on hand to collect all your baggage off the carousel and escort you curbside to meet your English-speaking Driver for a transfer to The Merrion Hotel, where you have a Merrion Suite.
- This service includes full assistance in case of flight delays, cancellation or passenger delay and special needs. (Assistant at disposal for 1 hour)
- Please note that portage service is not included however if you wish
- you may request this locally and pay for it directly to the porters.
- Transfer to the hotel by private English-speaking Driver

www.celebraionescapes.com

678-500-9548

Celebration

· ESCAPES ·

— TRANSFORMING DREAMS INTO MEMORIES —

Upon arrival at the hotel, you will be met by the Concierge who will welcome you to Dublin with a private and immediate VIP check-in experience. Your luggage will be managed and delivered to your accommodation.

After check-in, As your rooms may not be ready, you will enjoy a chance to stretch your legs and get moving again with a walking tour of the city with Pat Liddy, guide to HRH The Queen.



Enjoy a **3-hour walking tour** of Dublin, and discover the historic city's main sites, such as the bohemian Temple Bar district, and **Dublin Castle**. Immerse yourself in Irish history and hear music and stories that make Ireland's capital city so unique.

Celebraion

· ESCAPES ·

— TRANSFORMING DREAMS INTO MEMORIES —



Highlights:

Stroll along the cobbles of **Temple Bar and Trinity College**, catching the cadences of Irish accents cascading through the streets.

Stand by the River Liffey and tilt your nose to inhale the hops wafting from the Guinness Brewery.

Marvel at the soft lilt of the Gaelic language
Learn about some of Ireland's

famous writers and freedom fighters
Walk across the enchanting Ha'penny Bridge.

Celebration · ESCAPES ·

— TRANSFORMING DREAMS INTO MEMORIES —



After your tour, you will be returned to your hotel where you will be at leisure .
Settle into your accommodations and relax.

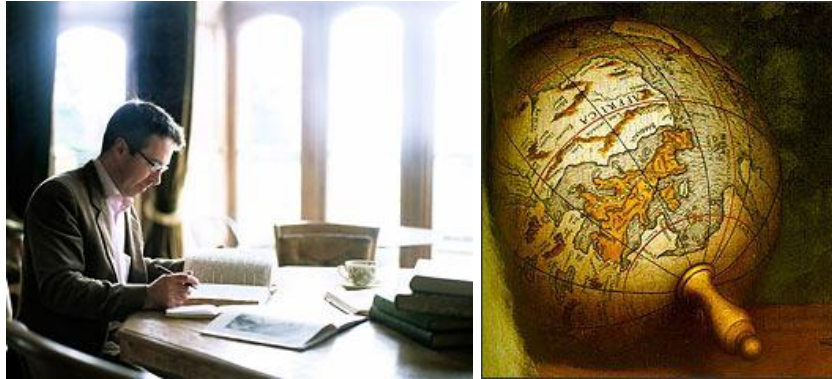
Enjoy Lunch in the hotel on your own today.

3:00pm: Meet your private English-speaking driver in the lobby of your hotel for your transfer to the Shelbourne Hotel where you will have a VIP Celebrity Hosted Afternoon Tea.



Celebration · ESCAPES ·

— TRANSFORMING DREAMS INTO MEMORIES —



Enjoy afternoon tea with historian **Turtle Bunbury** at Shelbourne Hotel.
Speaker on Irish Culture - Turtle Bunbury – quite special!

The Hon. Turtle Bunbury, younger son of Lord Rathdonnell, is a best-selling author and historian based in Ireland. His books include the Vanishing Ireland series, Sporting Legends of Ireland, The Irish Pub & Living in Sri Lanka. He was curator of the first ever History Festival of Ireland in June 2012.

He is the presenter on the 'Genealogy Roadshow', an ongoing tv series which first aired on Ireland's RTE1 television channel in 2011.

In the 1990s he studied law and modern history at University of Groningen in the Netherlands and Trinity College Dublin. Then he was a journalist for several years on the South China Morning Post and in Cambodia.



After your high tea, you will be returned to your hotel, where you will be at leisure for the remainder of the day.

www.celebraionescapes.com

678-500-9548

Celebration · ESCAPES ·

— TRANSFORMING DREAMS INTO MEMORIES —

Dinner is on your own tonight. See Celebration Escapes' Restaurant Collection for recommendations on dining in Dublin.

Day 2 Ireland: Dublin - Dublin's Museums and Galleries



Breakfast in the hotel.

After breakfast, you will meet your private Professional National Gallery Expert, Cathy, in the lobby of your hotel who will escort you to the National Gallery for a VIP behind the scenes look at this infamous museum.

Celebration · ESCAPES ·

— TRANSFORMING DREAMS INTO MEMORIES —



Visit **National Gallery** and discover its collections. Gallery holds the national collection of European and Irish fine art.

A light, entertaining and interactive tour where you will gain a new insight into art and develop the skills to identify for yourself what you like and why! Better still, you will leave with the confidence and a framework of knowledge that sets you up to enjoy future art viewing in any gallery in the world.

This tour is an introduction to the world of art. Cathy uses a unique chronological order and style to chart the development of art up to and including modern art - effectively a 'crash course' in the history of art. Paintings from the gallery's extensive collection are used as examples, including Caravaggio's world famous *The Taking of Christ*, to explain the essence of different art movements. We look at Impressionism, at Cubism and at a selection of classic masterpieces and of course Irish Art.

Coffee break

You take a well-deserved coffee break to sample some of the delicious pastries in the gallery café before going to Trinity College for your tour of the Book of Kells exhibition.

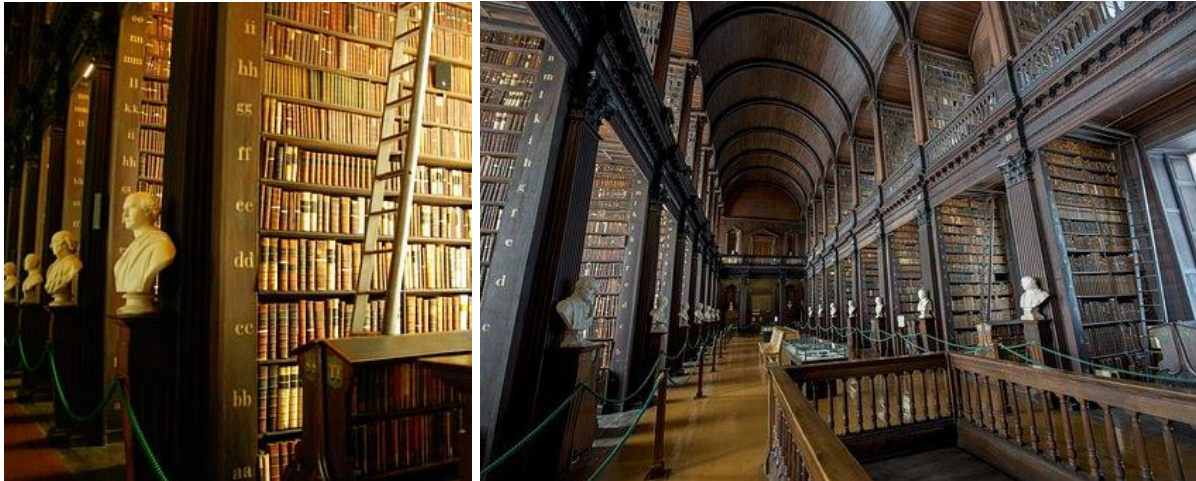


Book of Kells

No visit to Dublin would be complete without seeing this world renowned book containing the four Gospels of the New Testament in Latin expertly illustrated. The Book of Kells is famous for its lavish and beautiful decoration. You will enjoy a full and complete tour of the exhibition, including an explanation of the magical Ogham alphabet, leading to a better understanding as to why this book is so famous. We also look at the magnificent Long Room in the Old Library and walk through Trinity College and discover some of the history of this fascinating college.

Celebration · ESCAPES ·

— TRANSFORMING DREAMS INTO MEMORIES —



Spend the remainder of the afternoon on your own. You can continue to explore the city on your own or decide to return to your hotel to relax.



You may also like to visit Little Museum of Dublin and The Dublin Writer's Museum, where Dublin's literary celebrities from the past three hundred years are brought to life through their books, letters, portraits and personal items. The building, a restored Georgian mansion on Parnell Square, is a treasure in itself. The sumptuous plasterwork in the first floor Gallery of Writers is worth a visit alone.

Day 3 Ireland: Dublin - Kildare & Wicklow

Breakfast in the hotel.

Celebration · ESCAPES ·

— TRANSFORMING DREAMS INTO MEMORIES —

After breakfast, you will meet your private English-speaking Driver & Professional local guide in the lobby of your hotel for a tour of Kildare & Wicklow.



The Grand Tour is the quintessential circuit of Kildare and Wicklow, taking in the most spectacular scenery, the most beautiful big houses and gardens and the most intriguing Early Christian heritage sites... in a route as suited to a short visit as a long, leisurely meander.



Celebration · ESCAPES ·

— TRANSFORMING DREAMS INTO MEMORIES —

Historically, the 'Grand Tour' was a European sojourn undertaken by young aristocrats, a rite of passage soaking up the continental highlights. Kildare Wicklow recaptures that, offering a complete Irish experience within a short drive of Dublin.



Roam from St. Kevin's sixth century monastic settlement at Glendalough to great mansions like Russborough and Carton House.

Stop to smell the flowers in ravishing Irish gardens, savour warm village welcomes, or soak up epic scenery ranging from grassy plains, glacial lakes and wild mountain passes to a surprising eastern coastline.

Celebration · ESCAPES ·

— TRANSFORMING DREAMS INTO MEMORIES —



Enjoy a private Sheepdog demonstration at Russborough House



Along with the hotspots you'll find plenty of hidden gems: a Givenchy dress worn by Princess Grace at the Newbridge Museum of Style Icons; a submerged town land beneath the Blessington Lakes, a fairy bower at Lullymore, at the heart of the Bog of Allen. Get ready for an unforgettable adventure right on Dublin's doorstep.

www.celebraionescapes.com

678-500-9548

Celebraion

· ESCAPES ·

— TRANSFORMING DREAMS INTO MEMORIES —



Once back in Dublin, enjoy a private Literary Pub Crawl

After your tour, you will be returned to your hotel, where you are at leisure until this evening.

5:00pm: Meet your private English-speaking professional guide in the lobby of your hotel who will escort you on a fun and interesting tour of Dublin's Pubs.

Colm Quilligan kicks off the Literary Pub Crawl with a song - Waxie's Dargle, with cheerful lines such as "When food is scarce and you see the hearse / You'll know you've died of hunger" - then takes us from the Duke pub through the cobbled square of Trinity College and into several pubs in a nearby maze of narrow streets.

Celebration · ESCAPES ·

— TRANSFORMING DREAMS INTO MEMORIES —



He quotes at ease from Joyce, Behan, Beckett, Yeats and even James Larkin and Flann O'Brien, and although he must have said it all 1,000 times, he is witty, enthusiastic and informative, happy to veer off the mark and into subjects that wouldn't be covered by the city's tourist brochures, such as Eamon de Valera's signing, in 1945, of a condolence book for Adolf Hitler...

After the tour, you will have dinner in the city with your guide.

After dinner, you will be escorted back to your hotel where you are at leisure for the remainder of the evening.

Day 4 Ireland: Dublin – Belfast



Breakfast in the hotel.

After breakfast, you will meet your private English-speaking Driver & Professional local guide in the lobby of your hotel for a journey to Belfast today.

Celebration · ESCAPES ·

— TRANSFORMING DREAMS INTO MEMORIES —



It was the manufacture of linen which made Belfast Ireland's biggest city by 1888. The yellow cranes which dominate the river are Samson and Goliath and signpost the Harland and Wolff shipyard where the world-famous Titanic ship was built.

This thriving city is divided into four quarters: the Gaeltacht Quarter, the Cathedral Quarter, the Queen's Quarter and the Titanic

Quarter. Each quarter has its own defining characteristics, but the one that unifies them is the people and their charismatic nature and welcoming charm. With so much to do in each, it's hard to know where to begin your exploration of this wonderful city.

The Gaeltacht Quarter



The Cathedral Quarter



Celebration · ESCAPES ·

— TRANSFORMING DREAMS INTO MEMORIES —



Taking its name from St. Anne's Cathedral, the Cathedral Quarter was deemed a Conservation Area in 1990 as a means to preserve its identity as the historical heart of Belfast.

Walking through its narrow cobbled streets you will find many intriguing buildings that really add to its intimate charm.

More recently this area has started to play a key role in the arts and crafts scene in Belfast with many visual and performing artists making it their home.

The Queen's Quarter



Within the Queen's Quarter you'll find some stunning architectural gems, including Queen's University, the Botanic Gardens and the Palm House (all from the 19th Century).

Celebration · ESCAPES ·

— TRANSFORMING DREAMS INTO MEMORIES —

This part of Belfast is brim-full of cultural hotspots with several contemporary art galleries, a diverse fusion of restaurants and some fantastic pubs offering anything from traditional Irish music to Jazz sessions.

The Titanic Quarter



Celebraion

· ESCAPES ·

— TRANSFORMING DREAMS INTO MEMORIES —

We begin the tour in the **Gaeltacht Quarter**.



On to one of the finest Classical Renaissance buildings in Europe; it resembles an American state capital building.

See the ornate dome, grand staircase and the poignant marble figures commemorating the loss of the Titanic.

Cross the road to the Linen Hall Library which has been lending books for over 200 years and is the oldest surviving subscription library in the UK.



Close by is the Grand Opera House, Northern Ireland's premier theatre.

During the tour you will visit some of Lewis sites, such as 'The Searcher' at Hollywood Arches Library - the CS Lewis centenary sculpture by Northern Irish artist Ross Wilson is an inspired creation based on the character of Digory Kirke, who, in the Narnia story, 'The Magician's Nephew'; Saint Mark's Church - this was CS Lewis' local church in which he was baptized on 29

January 1899 and confirmed on 6 December 1914.

Celebraion

· ESCAPES ·

— TRANSFORMING DREAMS INTO MEMORIES —



There is a stained-glass window in the church, donated by the Lewis brothers in memory of their parents, designed by Irish artist M. Healy. And C.S Lewis Reading Room at Queens University Belfast.

Located in the tower area of Floor 1 of The McClay Library, you'll find a replica of the wardrobe used in the "The Lion, The Witch and the Wardrobe" which marks the entrance to the room.

The reading area features glass engraved quotations from the author, and the carpets and central table are also based on Narnia themes. It's a great tribute to C.S Lewis, whose mother attended the university and of course brings visitors that little bit closer to the magic of Narnia. In addition, the university also holds letters from C.S Lewis to his friend Captain Bernard Acworth and were donated to the university in 2012 – the ten rare unpublished letters are held in the the C.S Lewis Reading room.



Titanic Belfast is a "must see" visit in any tour of Belfast and Northern Ireland.

It is located in the heart of Belfast, right beside the historic site of this world-famous ship's construction. Housed in an iconic, 6-floor building.

Celebration · ESCAPES ·

— TRANSFORMING DREAMS INTO MEMORIES —



The adventure begins the moment you walk through the door and into the building's giant atrium surrounded by the four 'ship's hull' shaped wings which house the Titanic Experience.

As you journey through the nine large galleries of this state-of-the-art interactive exhibition, you will uncover the true story of the Titanic, from her conception in Belfast in the early 1900s, through her construction and launch, to her famous maiden voyage and subsequent place in history.



At the start, you'll learn about Belfast at the turn of the century as a thriving boom town and experience a thrilling ride through a dramatic presentation of the shipyards and the Titanic under construction. Watch the launch from the slipways and explore the sumptuous luxury and superb craftsmanship of Titanic's

interiors.

Be brought deep into the stories of the passengers, the crew and the heroes of the day; relive the drama of the tragic end to Titanic's maiden, and only, voyage, and visit the wreck at her resting place on the floor of the North Atlantic. Voyage to the bottom of the sea in our unique Ocean Exploration Centre with live links to contemporary undersea exploration.

Enjoy breathtaking views to the slip-ways where the Titanic was launched and relax in one of the superb restaurants. And if you'd like a souvenir to remind you of your trip to the home of the Titanic, there's plenty to choose from in the Titanic Store.

Day 5 Ireland: Dublin – Ballyfin Demesne

Breakfast in your hotel.

After breakfast, check out of your hotel and meet your private English-speaking driver in the lobby of your hotel for your transfer to Ballyfin.

www.celebraionescapes.com

678-500-9548

Celebration · ESCAPES ·

— TRANSFORMING DREAMS INTO MEMORIES —

Upon arrival at Ballyfin, you will meet the concierge who will welcome you with a private VIP Irish check-in experience. Your luggage will be managed and delivered to your accommodations.

The remainder of the day is at leisure for you to enjoy the hotel, the property and get acquainted with your holiday surroundings.

Lunch and Dinner are on your own today.



Day 6 Ireland: Ballyfin Demesne

24, Dec Christmas Package at Ballyfin Demesne

(Sample each year the Christmas Itinerary will vary slightly)

Breakfast in the Manor House.

After breakfast, Morning at leisure – tour of the Demesne – wrap up well for some brisk walks as you explore the gardens.

Enjoy an Irish Coffee in the Tower and the magnificent views of Laois and surrounding counties

Celebration

· ESCAPES ·

— TRANSFORMING DREAMS INTO MEMORIES —



Casual lunch in the Van der Hagen Room

After Lunch, you will enjoy a Horse-drawn carriage around the lake and forest, a magical surprise along the way. The remainder of the day is at leisure to explore the grounds or relax in the Manor House.

This evening, before dinner, you will join in the tradition of singing Christmas carols by the fire, enjoying mulled wine & canapés. It's a lovely way to meet some new friends who are also staying in the Manor and to begin a festive holiday.

Dinner tonight - Christmas Eve Supper in the State Dining Room



Celebration · ESCAPES ·

— TRANSFORMING DREAMS INTO MEMORIES —

Day 7 Ireland: Ballyfin Demesne

25, Dec Christmas Package at Ballyfin - (Sample each year the Christmas Itinerary will vary slightly)



Breakfast in the Manor House. Christmas Day special breakfast.

After breakfast, visit to the local church for Christmas Service

The remainder of the morning is at leisure to relax in the hotel, explore the grounds or just rest.

Pre-lunch champagne served in the Saloon with a visit from Santa Claus.

Gala Christmas lunch in the State Dining Room.

After lunch, Relax and enjoy the afternoon with family games - at leisure on the property.

Pre-Dinner Whiskey tasting in the Library.

Christmas Night – candle-lit supper in the Library in front of the log fires with entertainment.

Day 8 Ireland: Ballyfin Demesne

Celebration · ESCAPES ·

— TRANSFORMING DREAMS INTO MEMORIES —



26, Dec Christmas Package at Ballyfin - (Sample each year the Christmas Itinerary will vary slightly)

Breakfast in the Manor House.

After breakfast, meet the Manor House Guests and your driver in the lobby for an optional visit to the races at Leopardstown (Dublin).

You will enjoy a Treasure Hunt with surprises along the way. Coffee and treats will be served.

Spend the day at the races and return in the early evening.

Dinner at the Manor House

Overnight Ballyfin Demesne

Day 9 Ireland: Ballyfin Demesne – Dublin – US & Home

Breakfast in the Manor House.

After breakfast, meet your private driver in the lobby for your transfer to Dublin airport to meet your international flight to the US and forward to Home.

Celebration · ESCAPES ·

— TRANSFORMING DREAMS INTO MEMORIES —

End of Services.

Ready to plan your journey? Contact us today ! 678-500-9548

Schedule Your Creative Planning Session Now!

The Merrion Hotel - EPITOME OF RELAXED GRANDEUR

The Merrion, located in the heart of Dublin city centre, is the capital's most luxurious five star hotel, and a proud member of The Leading Hotels of the World.

The 142-bedroom and suite hotel is as welcoming as it is stylish. An impeccable restoration of four Georgian townhouses, The Merrion is a marriage of exquisite comfort, relaxed elegance and advanced guest facilities, including free Wi-Fi, an 18m pool, spa and gym.

The Merrion is home to the 2-star Michelin Restaurant Patrick Guilbaud, The Cellar Bar, The Garden Room, and the intimate No. 23 Cocktail Bar.

This 5 star luxury hotel is to be found in the heart of Georgian Dublin, opposite Government Buildings and a few minutes' walk from galleries, museums, the I.F.S.C, Dublin Convention Centre, pubs, restaurants and the shops of Grafton Street. Located in the centre of Georgian Dublin,

The Merrion is Dublin's most luxurious 5 star hotel. Created from 4 Georgian Townhouses, facilities include 2 bars, 2 restaurants, drawing rooms, private gardens, 18m pool and a fully equipped gymnasium.

WHAT WE REALLY LIKE ABOUT THE MERRION HOTEL

- It has Ireland's largest private art collection.
- It has Beautifully landscaped private gardens.
- It has Ireland's only 2 Michelin-star restaurant.

Celebration · ESCAPES ·

— TRANSFORMING DREAMS INTO MEMORIES —

ACCOMMODATIONS THE MERRION SUITE



Celebration · ESCAPES ·

— TRANSFORMING DREAMS INTO MEMORIES —

Located on the upper floors of the Georgian Main House, the one bedroom Merrion Suites overlook The Merrion's private gardens. The suites are decorated with Irish fabrics and period-style furniture in keeping with the architecture and interiors of the original 18th-century townhouses.

Each Merrion Suite is furnished with a king-size bed (6ft 6"). The Sitting Room has a dining room table seating four, a sitting area with a sofa and two armchairs, a coffee table with a selection of lifestyle magazines, a music system and a decorative Georgian fireplace.

Each Merrion Suite is also is equipped with free Wi-Fi, multi-line telephones, personalised voicemail with remote access, video conferencing, cable/satellite television with movies available on demand, individually controlled air-conditioning, two armchairs, a writing desk with Merrion stationery, Nespresso machine and a fully-stocked minibar.

Location: The Georgian Main House

View: Magnificent views of The Merrion's period gardens

Bed: One King Bed (6ft 6") One rollaway bed or crib can be placed in room on request

Bathroom: Large bathroom with Italian Carrera marble. Separate bathtub & shower

Capacity: 2 Adults and 1 Child

Size: (m2): 62 (sq. ft.): 682

CULINARY & WINE - AT THE MERRION



THE GARDEN ROOM

The Garden Room is a restaurant with character, comfortable, with a menu designed for sharing tastes and flavours and whimsical combinations, created by executive chef Ed Cooney and his team.

Celebration

· ESCAPES ·

— TRANSFORMING DREAMS INTO MEMORIES —



THE CELLAR BAR

The relaxed atmosphere in the Cellar Bar makes it the perfect place to relax over a drink or two and enjoy the all-day gastro-pub menu.

Along with a full bar service, carefully selected wines are available by the glass. Great service and a convivial atmosphere make the Cellar Bar an ideal choice for lunch, dinner or just a quiet pint.



RESTAURANT PATRICK GUILBAUD

The Merrion is proud to be home to Restaurant Patrick Guilbaud, Ireland's only two-star Michelin restaurant is situated in the luxurious surroundings of The Merrion 5 star hotel, with magnificent views overlooking the hotel's classical gardens.

Restaurant Patrick Guilbaud's pursuit of perfection is evidenced in cuisine that is as sophisticated as it is immaculately presented. Delicious and innovative dishes are prepared from the finest ingredients, while service is impeccable, combining efficient French decorum with discreet Irish charm.



ART AFTERNOON TEA

Afternoon tea, with pastries inspired by the hotel's magnificent art collection, is served in the Drawing Rooms. It's art that's good enough to eat.

'Art Tea' at The Merrion 5 star hotel is the most lavish afternoon tea in Dublin. Treat yourself to a slice of 19th- or 20th-century art served on fine china with miniature sweet creations inspired by the work of J.B Yeats, William Scott, Louis Le Brocquy and others.

The gracious surroundings of The Merrion's Drawing Rooms are the perfect place to relax for an afternoon with a selection of delectable treats, accompanied by teas and coffees selected by our in-house tea masters and barista, while browsing through a complimentary copy of The Merrion art collection catalogue.

Art Tea is served at 1.30pm and 4.30pm daily.

Celebration · ESCAPES ·

— TRANSFORMING DREAMS INTO MEMORIES —

BALLYFIN DEMESNE

5 Star luxury country house hotel in the heart of Ireland. Set at the foot of the Slieve Bloom Mountains in the center of Ireland, Ballyfin is a place of history and romance, of tranquility and great natural beauty.

The house has long been admired as the most lavish Regency mansion in Ireland, and after eight years of restoration, Ballyfin re-opened in May 2011 as a 5 star country house hotel like no other.

It offers the very best of Irish hospitality in the most beautiful surroundings imaginable. With only twenty rooms for the 614 acre estate, this 5 star luxury hotel is the perfect place for a break from the stresses of the modern world and provides discretion and privacy like few other destinations. With just 20 bedrooms it is also the ideal place to take over for a very special celebration.

Come and enjoy life in 5 star luxury in one of the greatest country houses in Ireland.

Gardens and Estate

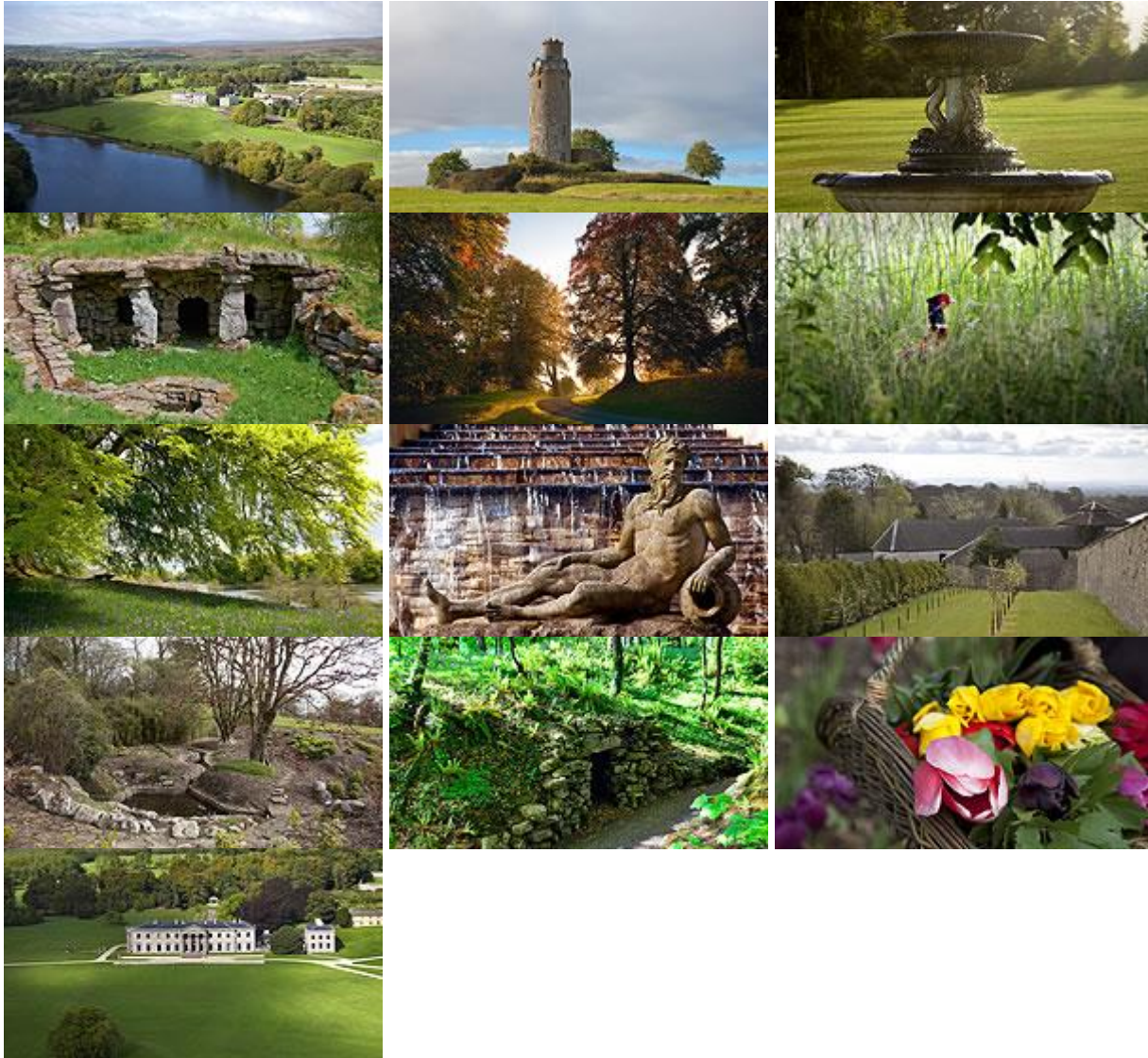


www.celebraionescapes.com

678-500-9548

Celebration · ESCAPES ·

— TRANSFORMING DREAMS INTO MEMORIES —



The estate is famed for its natural and man-made beauties and as the demense is open to residents only, Ballyfin offers a perfect opportunity for rest, tranquility and outdoor activities.

At Ballyfin, stone walls enclose 614 acres of parkland, a lake and ancient woods, delightful garden buildings, follies and grottoes. The landscape, laid out in the mid-eighteenth century, is among the finest examples in Ireland of the natural style of gardening inspired by 'Capability' Brown.

www.celebraionescapes.com

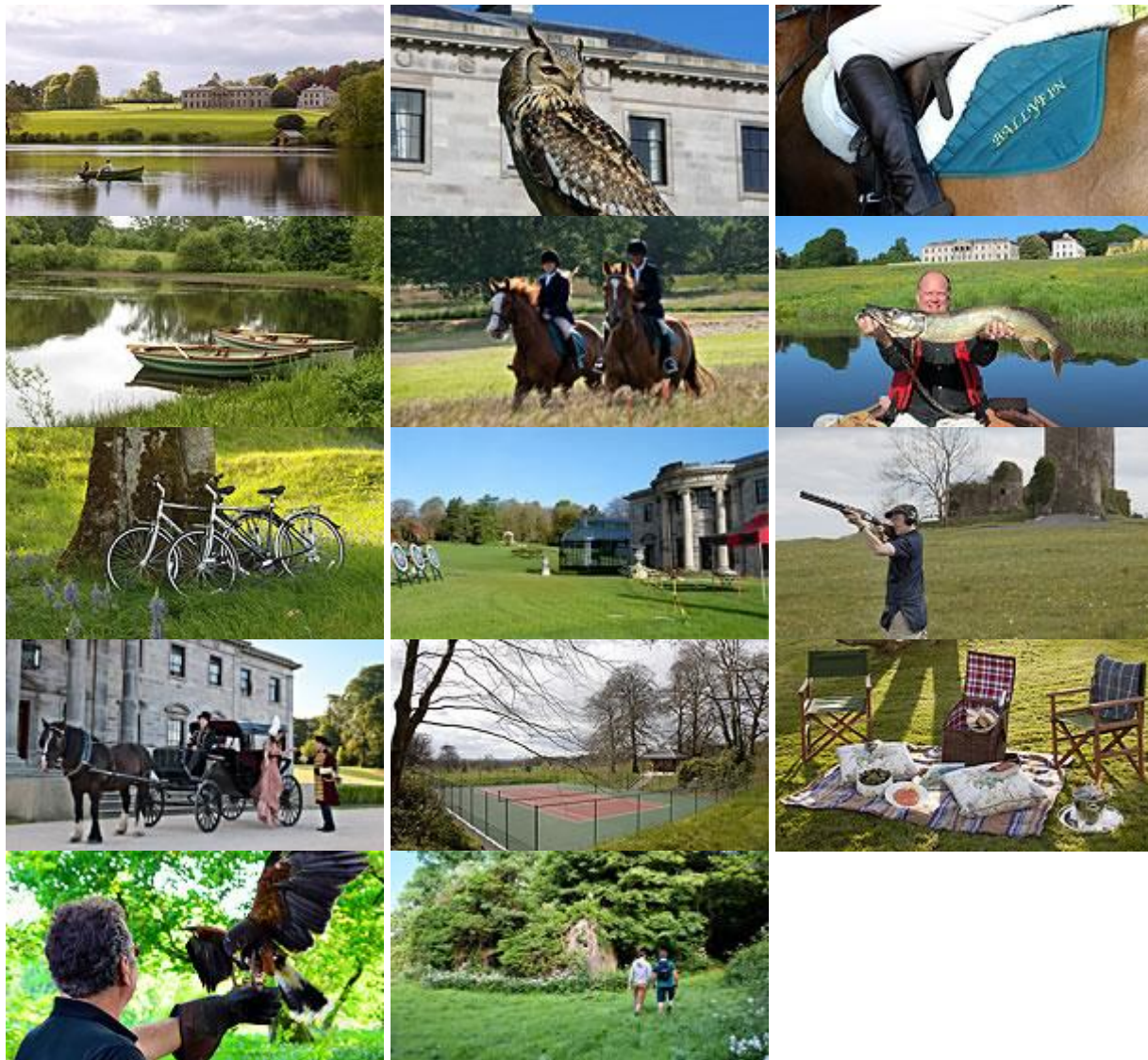
678-500-9548

Celebration · ESCAPES ·

— TRANSFORMING DREAMS INTO MEMORIES —

There are many highlights that will keep garden lovers and outdoor enthusiasts exploring for days. These include the medieval-style tower, built as a folly in the 1860's, the walled garden with its formal borders and kitchen gardens, the abundant wildlife to be seen on early morning walks and the restored Edwardian rock garden.

Estate Activities



Celebration · ESCAPES ·

— TRANSFORMING DREAMS INTO MEMORIES —

Among the outdoor activities offered at Ballyfin are coarse fishing on the lake, which has a large stock of roach and pike, croquet, clay pigeon shooting, tennis, archery and falconry. Within the demesne there are several miles of hard surfaced paths as well as miles of mown grass paths offering a gentle stroll or the exhilaration of mountain biking. The gardens and park lands are a delight to explore and picnics are offered to enjoy in the grounds.

Ballyfin Demesne is full of wildlife, so much to look out for while exploring the demesne. Wild birds to name a few that can be seen are Kestrels, Sparrow hawks, Hen Harriers, Buzzards, long eared Owl, Cuckoo, Pheasants, Kingfishers, Swans, Cootes and Moorhens.

Catch a glimpse of a Fox, Deer, Red Squirrel, Mink and Pine Marten. Enjoy a leisurely afternoon fishing on the lake, Pike, Roach, Tench and Eel (catch and return).

Some of the activities available

- BOATING ON THE LAKE
- COARSE FISHING ON THE LAKE
- BALLYFIN PICNIC EXPERIENCE
- HORSE RIDING*
- PONY & CARRIAGE*
- CLAY PIGEON SHOOTING*
- AIR RIFLE TARGET SHOOTING*
- ARCHERY*
- FALCONRY*

* EXTRA CHARGE APPLIES

House Activities



Celebration · ESCAPES ·

— TRANSFORMING DREAMS INTO MEMORIES —



Modelled on the tradition of the Irish county house, Ballyfin is designed for the most discerning guests who want to enjoy a few days of absolute tranquility and to experience the noble tradition of Irish hospitality.

Guests are encouraged to enjoy Ballyfin in their own fashion; it is a place of urbane leisure and refined relaxation.

There are six reception rooms including an 80 foot library with roaring log fires and collections of rare books. Wine and whiskey tastings, music recitals and art and architectural tours of the house are among the activities offered but we can also provide tailor-made activities to suit our guests' requirements.

COSTUME DEPARTMENT

Have you dreamed in starring in your own period drama? With the backdrop of Ballyfin (long admired as one of the most lavish regency mansions in Ireland) and a stunning collection of period costumes (from the Lyric Opera Company in Chicago - one of the best opera companies in the world) - you now have the opportunity. This is especially suitable for groups where guests can visit the specially designed costume room to try on and choose their costumes. With all guests dressed up, the group is now ready to enjoy a splendid evening with a fine banquet and entertainment to make the most of the occasion.

THE COSTUME EXPERIENCE

It is frockage Heaven - where you will find a wonderful selection of 40 costumes along with a great selection of matching accessories.

Your group will have great fun exploring the rails of beautiful costumes and selecting one to suit each individual

Our trained dressers will ensure you look the part for the evening and your selected costume will be delivered to your room.

During pre-dinner drinks, Ballyfin's photographer will be on-hand to photograph all participants individually and in group shots using the spectacular settings of Ballyfin as a backdrop.

BALLYFIN COSTUME DEPARTMENT

Celebration · ESCAPES ·

— TRANSFORMING DREAMS INTO MEMORIES —

THE LIBRARY

The 80ft library is perfect for whiling away a few hours, relaxing by the open fire reading from a choice of over 5,000 volumes of books.

WINE & WHISKEY TASTING

A highlight for many guests is a trip to Ballyfin's well-stocked Cellar. Guided by our expert sommelier, enjoy an evening of wine or whiskey tasting and you can personally select your wine so that it is perfectly decanted and ready for you at dinner. (pre-booking in advance required).

HISTORY TOUR

Ballyfin house has long been admired as the most lavish Regency mansion in Ireland, and after eight years of restoration, Ballyfin re-opened in May 2011 as a 5 star country house hotel like no other. Take a guided tour of the house and learn of the history of the families that lived at Ballyfin, the restoration period and enjoy hearing of the history of each room and the antiques and art.

ACCOMMODATIONS

Junior Suite: The Butler

Originally the bedchamber of Lady Caroline Coote's private suite, this handsome room overlooking the lake, with its dramatic red wallpaper has now been restored to its original proportions.



Originally the bedchamber of Lady Caroline Coote's private suite, this handsome room overlooking the lake, with its dramatic red wallpaper has now been restored to its original proportions.

Celebration · ESCAPES ·

— TRANSFORMING DREAMS INTO MEMORIES —

Many of the furnishings are Georgian. The space between the windows, for example, is filled by a fine George II secretaire in pale mahogany with a 'swan neck' pediment. On each side of the bed are striking mezzotints by Thomas Frye, a leading Irish-born artist of remarkable originality.
BEDROOM: Overlooks front & lake 33 sqm (355 sq ft).
BATHROOM: Overlooks courtyard 13 sqm (140 sq ft).

Junior Suite: The Lady Caroline Coote



With its gracefully rococo stucco work ceiling, the Lady Caroline Coote Room (formerly Lady Coote's boudoir) is among the most pleasingly elegant bedrooms at Ballyfin.



With its gracefully rococo stucco work ceiling, the Lady Caroline Coote Room (formerly Lady Coote's boudoir) is among the most pleasingly elegant bedrooms at Ballyfin.

The decoration with a vivid, electric blue wallpaper transforms the room into a suggestive tent-like enclosure. It perfectly reflects the interest in textiles seen in interiors of the Empire period. The colour serves as an ideal foil for the early-Georgian portrait over the chimneypiece showing Henry Meredyth of Newtown, County Meath, by the Irish artist Charles Jervas.

BEDROOM: Overlooks front & lake 40 sqm (430 sq ft).
BATHROOM: Overlooks front & lake 13 sqm (140 sq ft).

Junior Suite: The Little Library



This spacious and comfortable room on the mezzanine is a welcoming bookish retreat. The Little Library enjoys a private balcony overlooking the kitchen court.

Celebration · ESCAPES ·

— TRANSFORMING DREAMS INTO MEMORIES —



This spacious and comfortable room on the mezzanine is a welcoming bookish retreat. Naturally the well-endowed bookshelves dominate, however, the pictures displayed here include Bliss by the nineteenth-century genre painter Erskine Nicol who enjoyed an extended career in Ireland, and a portrait by the Irish painter William John Leech of his wife Elizabeth, done when they were on honeymoon. The large bathroom looks out over the Pleasure Grounds and the Cascade.

Large hallway.

BEDROOM: Overlooking courtyard, small balcony 43 sqm.

BATHROOM: Overlooking cascade 20 sqm.

Lady Sarah Pole Room and The Little Library on same mezzanine floor.

Junior Suite: The Lady Kildare



Overlooking the lake and lawns to the front of the house Lady Kildare's room has a wall fabric in a blue and white chiniserie style.



Lady Kildare's room commemorates Emily Lady Kildare (later Duchess of Leinster). On a visit to Ballyfin in May 1759 Lady Kildare wrote "yesterday I saw a most delightful place indeed, much beyond any place I have seen in Ireland – Ballyfin, there is a piece of water there very like what I fancy ours will be, only broader; fine plantations and the

Celebration · ESCAPES ·

— TRANSFORMING DREAMS INTO MEMORIES —

greatest varieties of trees and flowers almost that ever I saw anywhere”

The ‘Mikado’ Claremont fabric used to upholster the walls in traditional fashion is complimented by a mix of antique and oriental furniture creating a fresh and inviting ambience.

BEDROOM: Overlooks lake and lawns, balcony. 32 sqm (336 sq ft)

BATHROOM: Overlooks fountain and a small private garden. 11 sqm (115 sq ft)

Junior Suite: The Lady Mornington



This south east facing room with wide views of the lake and the lawns to the east and south east front of the house is named for the Countess of Mornington Anne Wellesley, of Dangan Castle near Trim, Co. Meath.



Her second son William Wellesley inherited Ballyfin from his cousin William Pole in 1781 at the age of 18 and hence changed his name to Wellesley Pole.

Her oldest son Richard became the Marquis Wellesley and was Governor General of India and later Lord Lieutenant of Ireland while her third son Arthur Duke of Wellington became the illustrious military leader and prime minister of the United Kingdom.

The room is decorated in dusky pink colours enhanced by fabrics in “Indian toil of Life” theme from Claremont.

BEDROOM: Overlooks lake and lawns. 32 sqm (336 sq ft)

BATHROOM: Overlooks courtyard 11 sqm (115 sq ft)

Celebration · ESCAPES ·

— TRANSFORMING DREAMS INTO MEMORIES —

Culinary & Wine

Ballyfin Food



The best meals start with the best ingredients and wherever possible we source according to the mantra: 'local, natural and seasonal'.

The gardens yield a wide abundance of fruit, herbs, salads and vegetables throughout the year, which enable the kitchen team to provide the freshest local seasonal produce for the dining room ensuring the finest culinary experiences.

Ballyfin hens provide us with fresh eggs every day for breakfast and our guests are welcome to collect the eggs each morning. Our honey is produced by our busy bees and the bee hives can be located near the grotto.

Celebration · ESCAPES ·

— TRANSFORMING DREAMS INTO MEMORIES —

The sausages are a special blend specifically made for Ballyfin by Feighery butchers in the local town of Portlaoise. Feighery's butchers and La Rousse Foods source meats for us from across Ireland. Trisha Butler and her family provide organic chickens from their farm in Co. Kilkenny and our free range duck is supplied by Mary and Tony Walsh also in Co. Kilkenny.

Fish is landed from the day boats on the south coast and delivered by the Duncannon Fish Company. Glenilen Farm in Co. Cork supply our butter and Adrian Mueller makes the seeded sour dough in the local town of Mountmellick.

With these raw materials – the fruit of the Irish soil – something very special is sure to ensue, but the extra magic is applied in the kitchen by our team of chefs.

Dining Options



Every dining experience at Ballyfin is a gastronomic affair. Throughout the year our

www.celebraionescapes.com

678-500-9548

Celebration · ESCAPES ·

— TRANSFORMING DREAMS INTO MEMORIES —

Head Chef and his team along with our gardeners and local suppliers work together to produce not only mouth-watering dishes but to make the most of what Ballyfin walled gardens and the Irish countryside has to offer. From “garden to plate” at the very best.

Guests hiking, biking or simply relaxing may opt to take with them a traditional gourmet picnic hamper to enjoy in any location across the grounds, or select an al fresco meal on the terrace of the main house. Alternatively, enjoy the panoramic views from the picnic house (additional cost applies).

The cocktail hour is back at Ballyfin, ushering in dinner where you will enjoy the grandeur of the State Dining Room and the Van Der Hagen Room.

Downstairs the Cellar Bar offers a relaxed atmosphere and informal setting and provides residents with the opportunity to enjoy a more casual dinner experience.

Private dining can be arranged in the Porcelain Room lined with the famous ‘Flora Danica’ set of china or in the atmospheric Wine Cellar. (pre-booking 24 hours in advance required for private dining and additional cost applies). At Ballyfin the architectural splendour of the rooms and their historical resonances combine with the food to make for truly memorable dining experiences. Guests dine at individual tables unless a preference is expressed to dine with other guests.

Spa & Treatments

Treatments & Leisure



Celebration · ESCAPES ·

— TRANSFORMING DREAMS INTO MEMORIES —



FITNESS AND TREATMENT ROOMS

The gym is fully equipped with the latest cardio vascular machines, audiovisual equipment and free weights. A personal training service is available on request.

The treatment rooms provide an ideal place to unwind, restore and to invigorate the body and mind. Our highly trained therapists will ensure you leave feeling revitalised and refreshed.

We hope you will feel free to discuss your treatment choices with our reservations team - they will know and understand the treatments and will advise on which experience would best suit your needs. Alternatively you can reserve an amount of time and upon arrival and consultation, your therapist will select treatments for you. We request that you book in advance of arrival to ensure we will have the availability of our therapists and treatment times required.

INDOOR POOL

Whether you feel like swimming some laps, enjoying some water exercises or simply relaxing, our 14m heated indoor pool, overlooking the courtyard garden, is a beautiful space for invigoration and wellbeing or relax in our vitality pool and sauna.

VITALITY POOL AND SAUNA

The vitality pool is equipped with a mixture of air and water based features. It includes a large feature seat with a combination of fine air bubbles and powerful water jets. The air pad in the centre of the pool floor offers an invigorating air massage while wall mounted hydro jets add vigorous leg and back massage to your experience. All features are available on demand and the water is kept at 40°C for your comfort while the low level lighting adds to the ambience.

Celebration · ESCAPES ·

— TRANSFORMING DREAMS INTO MEMORIES —

Golf



Championship golf is nearby with some of the finest golf courses in Ireland within driving distance of Ballyfin.

MOUNT JULIET (78 KMS)

The beautiful and challenging Mount Juliet golf course has established itself as a premier

golfing venue for professionals and leisure golfers worldwide. Chosen as the first and only Jack Nicklaus signature golf course in Ireland, the par 72, 7,300 yard layout boasts rolling fairways, many featuring water hazards and contoured greens, all superbly blended into the spectacular setting of this famous old Irish estate.

THE K CLUB (81 KMS)

Designed by Arnold Palmer, The Palmer Ryder Cup Course is ranked regularly in the top three parkland golf courses in Ireland. This Palmer designed golf haven is a must-play 'badge of honour' that has hosted the top golf players in the world. The Ryder Cup in 2006 and 11 European Opens testify to the importance of The Palmer Ryder Cup Course to European Golf.

THE HERITAGE (30 KMS)

A 72 par Championship golf course designed by Seve Ballesteros and Jeff Howes is located nearby in County Laois, with the Slieve Bloom Mountains as a backdrop. Five lakes and a stream meander through the course and bring water into play on ten holes. 98 beautifully shaped bunkers and 7,000 trees adorn the landscape, which is very gently undulating without any climbing involved.

Slieve Bloom Mountains



Celebration · ESCAPES ·

— TRANSFORMING DREAMS INTO MEMORIES —



The gentle rolling hills of the Slieve Bloom Mountains very near Ballyfin are among the most unspoiled and least explored areas in Ireland.

The area is made up of forests, blanket bog of a type unique to Ireland, interspersed with hidden valleys of great character, and interest to the nature lover. The natural colours of the landscape are remarkable in any season. Much of the higher reaches of the mountains have been designated as an Environmentally Protected Area for special preservation as an amenity for generations to come.

It is said that you can see half the counties in Ireland from the top of the Slieve Blooms. Alternatively wander around the foothills of the mountains, visiting the quaint villages, taking your time to stop along the way.

These are places where people will take the time to talk to you, where tourists are not so common and where the locals will have a genuine interest in you.

The Slieve Bloom Mountains are a hill walker's paradise. The mountains are not so high as to be dangerous, yet are not so low that they can still provide a challenge to every grade of walker. There is a wide choice of looped walks and long distance way-marked walks to help you to explore and enjoy this beautiful area.

The quiet roads and forestry trails and the range of gentle and challenging slopes of the Slieve Blooms also make the mountains a cyclists paradise.

Historical houses & gardens



Celebration

· ESCAPES ·

— TRANSFORMING DREAMS INTO MEMORIES —

BIRR CASTLE DEMESNE – A GLORIOUS CENTRE OF SCIENCE AND HORTICULTURE

The gardens at Birr are set in a landscape of 50 hectares and contain some of the largest and rarest tree species found in Ireland. The gardens have a rich history attached to them. They were originally landscaped around the lake in the eighteenth century by Sir William Parsons, and over the generations of the Parsons family the demesne has increased in beauty and interest.

The demesne is also home to Ireland's historic Science centre, where visitors may travel back to the time to when Birr Castle was a hub of scientific discovery and innovation. Private visits to the castle, hosted by Lord & Lady Rosse can be arranged for groups.

KILKENNY CASTLE - IN THE HEART OF THE MEDIEVAL CITY

Kilkenny Castle stands dramatically on a strategic height that commands a crossing on the River Nore and dominates the 'High Town' of Kilkenny City. Over the eight centuries of its existence, many additions and alterations have been made to the fabric of the building, making Kilkenny Castle today a complex structure of various architectural styles.

The original Anglo-Norman stone castle was built for William Marshal, 4th Earl of Pembroke (c.1146-1219) during the first decade of the thirteenth century. Kilkenny Castle later became the principal Irish residence of the powerful Butler family for almost 600 years.

The Butler ownership began when James (c.1360-1405), 3rd Earl of Ormond, purchased the castle in c.1391, and lasted until 1967 when Arthur, 6th Marquess of Ormonde (1893-1971), presented it to the people of Kilkenny in return for a token payment of £50.

EMO COURT – EIGHTEENTH-CENTURY MANSION AND LANDSCAPED GARDENS

Emo Court was designed by the architect James Gandon in 1790 for the Earls of Portarlington and is a magnificent example of the neoclassical style. During the middle of this century it was owned by the Jesuits, it was then acquired and extensively restored by Mr. Cholmeley-Harrison in the 1960s.

The house is surrounded by beautiful gardens and parkland which were first laid out in the eighteenth century and contain formal lawns, a lake and woodland walks with many fine trees and shrubs. The house and gardens were taken into State ownership in 1994.

HEYWOOD GARDENS

Colonel William Hutchinson Poe commissioned the leading architect, Sir Edwin Lutyens, to plan the gardens at Heywood. Known as 'The Italian Gardens,' they are the only example of Lutyens' work outside of Dublin.

Celebration · ESCAPES ·

— TRANSFORMING DREAMS INTO MEMORIES —

The gardens were completed in 1912. They consist of formal gardens, lakes, woodland and architectural features, such as Gothic gates and artificial ruins, embellished with medieval pieces such as the window taken from Aghaboe Abbey. The gardens in Heywood remained as structurally intact as they were when they were completed at the turn of the century.

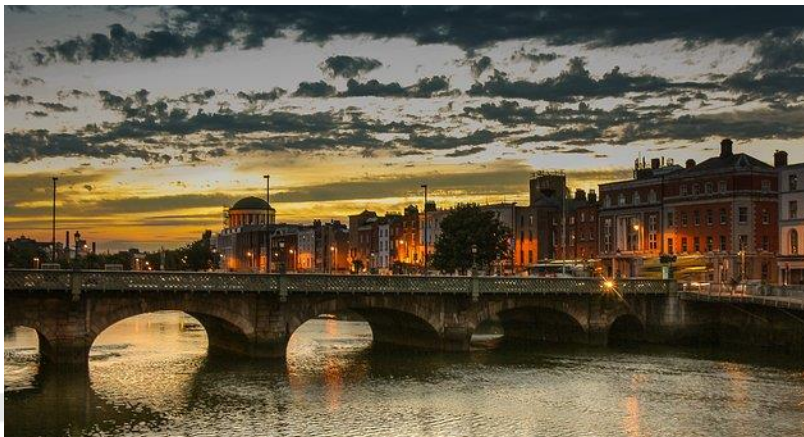
Day Trips From Ballyfin

KILKENNY – IRELAND'S FINEST MEDIEVAL CITY



The past echoes in every footstep as you walk through the medieval city of Kilkenny. Explore its ancient laneways, wonder at the majestic halls of Kilkenny Castle or experience the glory of thirteenth-century St Canice's Cathedral. Once you have finished sightseeing, browse the famous craft gallery opposite the castle or enjoy lunch in one of Kilkenny's many fine restaurants.

DUBLIN



The Irish capital offers a wonderful selection of activities – whether it is visiting the Georgian centre, Dublin Castle, galleries and museums or the Guinness Storehouse and the old Jameson Distillery.

www.celebraionescapes.com

678-500-9548

Celebration · ESCAPES ·

— TRANSFORMING DREAMS INTO MEMORIES —

NATIONAL STUD & JAPANESE GARDENS



Nowhere better symbolizes all that is great about County Kildare, the beating heart of Ireland's thoroughbred industry, than the stud, a unique attraction of outstanding natural beauty that is home to some of the most magnificent horses and sumptuous gardens to be found anywhere in the world. From horses to horticulture, the Irish National Stud & gardens offers you a unique experience.

THE SLIEVE BLOOM MOUNTAINS



The gentle rolling hills of the Slieve Bloom Mountains rise from the central plains of Ireland, very near Ballyfin and are among the most unspoiled and least explored areas in Ireland. The area is made up of forests, blanket bog of a type unique to Ireland, interspersed with hidden valleys of great character, and interest to the nature lover. The natural colours of the landscape are remarkable in any season.

Much of the higher reaches of the mountains have been designated as an Environmentally Protected Area for special preservation, as an amenity for generations to come. The mountains are surrounded by a necklace of villages, each one a gem. The quiet country roads are also great for a leisurely drive across the mountains with unparalleled views across the midlands.

www.celebraionescapes.com

678-500-9548

Celebration · ESCAPES ·

— TRANSFORMING DREAMS INTO MEMORIES —

It is said that you can see half the counties in Ireland from the top of the Slieve Blooms. Alternatively wander around the foothills of the mountains, visiting the quaint villages, taking your time to stop along the way, where it is like stepping back in time to an era when life moved at a much slower pace.

The Slieve Bloom mountains are a hill walkers paradise. The mountains are not so high as to be dangerous yet are not so low that they can still provide a challenge to every grade of walker. There is a wide choice of looped walks and long-distance-way marked walks.

Quiet lanes, gentle and challenging slopes also make the mountains a cyclist's haven. The quiet roads and forestry trails of the Slieve Blooms are ideal for leisurely and safe cycling either on or off the surfaced road.

KILDARE & NEWBRIDGE



Nestled within landscaped grounds and presented in an authentic village environment, Kildare Outlet Shopping is label heaven. You will find it difficult to resist temptation with over 60 brands such as Louise Kennedy, DKNY, Juicy Couture, Anya Hindmarch and Hugo Boss. Nearby visit The Newbridge Silverware Visitor Centre that showcases quality jewelry and lifestyle products and a museum of style icons

Celebration · ESCAPES ·

— TRANSFORMING DREAMS INTO MEMORIES —

BROWN THOMAS



Brown Thomas in Dublin is Ireland's most beautiful lifestyle store which offers an unparalleled retail experience. Established since 1849 Brown Thomas drives the vision of providing ultimate customer experience. Through internationally acclaimed and award winning window displays, renowned fashion shows, exclusive product launches and unique luxury boutiques – Brown Thomas is a destination for both Irish and International fashionistas – it proudly takes its place in the international stage of luxury retailing.

End of Services.

Ready to plan your journey? Contact us today ! 678-500-9548

Schedule Your Creative Planning Session Now!

www.celebraionescapes.com

678-500-9548